

Plug & Play, Lab and Office

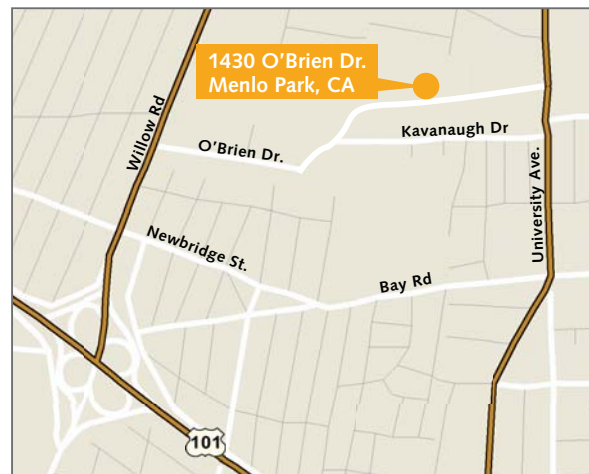
1430 O'Brien Drive, Suite F, Menlo Park, CA



FOR SUBLEASE

Features

- ±7,513 SF available (divisible to ±5,454 SF)
- Furniture included
- Wet and dry labs
- Tissue culture suites
- 7 private offices
- 2 conference rooms
- 7 cubicles
- Kitchen
- Reception
- Lease expiration: October 31, 2013



Contact

Gregg Domanico
650.769.3600
greggd@gvakm.com
LIC #00996779

Rico Cheung
650.769.3525
ricoc@gvakm.com
LIC #01067557

Eric Bluestein
650.769.3519
ericb@gvakm.com
LIC #01720416

www.gvakm.com

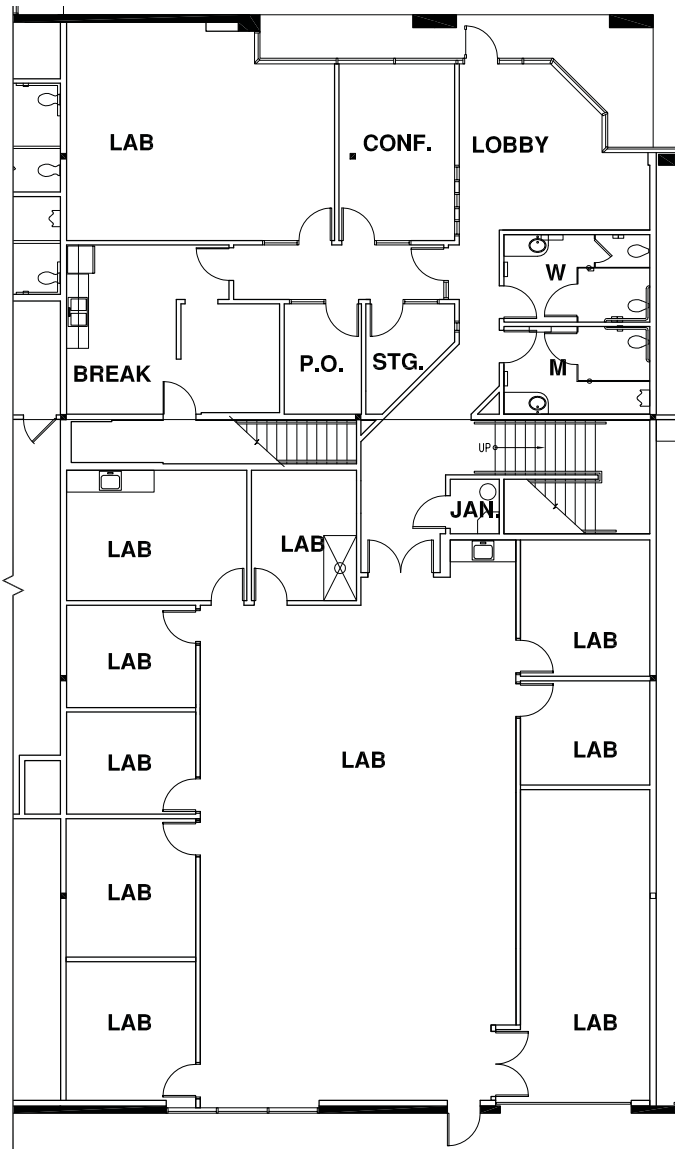
This information supplied herein is from sources we deem reliable. It is provided without any representation, warranty or guarantee, expressed or implied as to its accuracy. Prospective Buyer or Tenant should conduct an independent investigation and verification of all matters deemed to be material, including, but not limited to, statements of income and expenses. Consult your attorney, accountant, or other professional advisor.

GVA Kidder Mathews

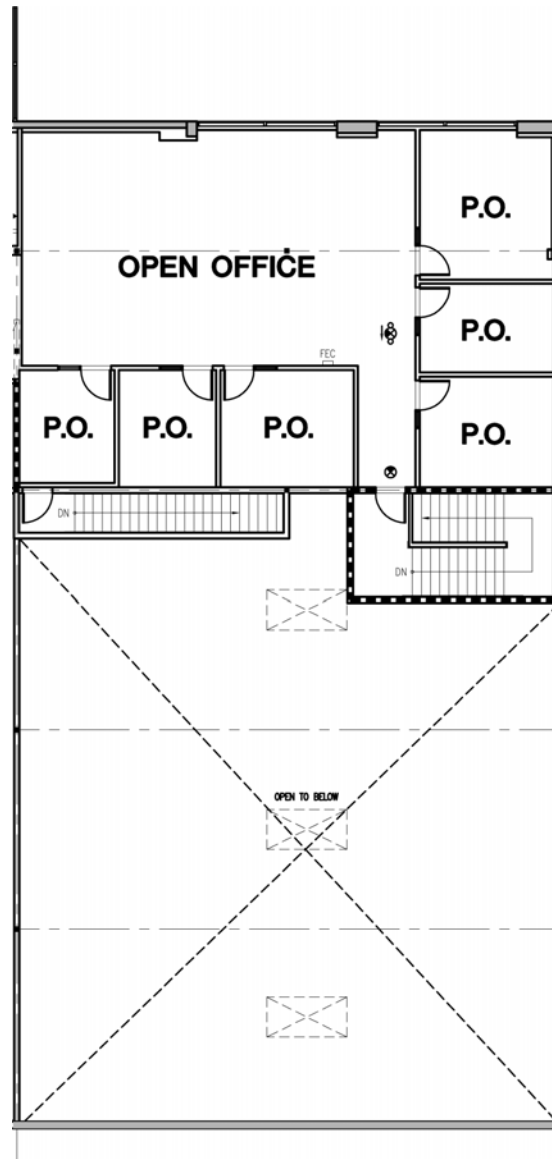
Plug & Play, Lab and Office

1430 O'Brien Drive, Suite F, Menlo Park, CA

FOR SUBLEASE



First Floor



Second Floor

Contact

Gregg Domanico
650.769.3600
greggd@gvakm.com
LIC #00996779

Rico Cheung
650.769.3525
ricoc@gvakm.com
LIC #01067557

Eric Bluestein
650.769.3519
ericb@gvakm.com
LIC #01720416

www.gvakm.com

Plug & Play, Lab and Office

1430 O'Brien Drive, Suite F, Menlo Park, CA

FOR SUBLEASE



Contact

Gregg Domanico
650.769.3600
greggd@gvakm.com
LIC #00996779

Rico Cheung
650.769.3525
ricoc@gvakm.com
LIC #01067557

Eric Bluestein
650.769.3519
ericb@gvakm.com
LIC #01720416

www.gvakm.com

This information supplied herein is from sources we deem reliable. It is provided without any representation, warranty or guarantee, expressed or implied as to its accuracy. Prospective Buyer or Tenant should conduct an independent investigation and verification of all matters deemed to be material, including, but not limited to, statements of income and expenses. Consult your attorney, accountant, or other professional advisor.

