



# 1555 Adams Drive

## MENLO BUSINESS PARK, MENLO PARK

PREMIUM OFFICE  
AND R & D SPACE

EXCEPTIONAL QUALITY  
FEATURES, AND AMENITIES

QUALITY LABORATORY AND  
MANUFACTURING SPACE

MEZZANINE STORAGE  
WITH LIFT

CONVENIENT LOCATION WITH A  
PARK-LIKE CAMPUS SETTING



**1555 Adams Drive (Building 17) at Menlo Business Park** is an attractive combination of office, laboratory and manufacturing space, ideal for scientific research companies.

This modern facility has an excellent combination of features including:

- Ample power (4000 amps of 480 volt power)
- Manufacturing/laboratory space and chemical fume hood
- Server room
- Sky lights and high ceilings
- 2" medium pressure gas line
- Outdoor equipment pad
- 2 covered loading docks plus 1 grade level dock
- 5,000 sq.ft. rooftop equipment deck
- Freight elevator and 3,000 sq.ft. of unfinished storage space
- Furnished conference rooms, training room, and cubicles

With a strategic Menlo Park/Mid-Peninsula location close to Stanford University and the Stanford Research Park, Menlo Business Park has easy access to all major freeways is just minutes from three international airports, the Silicon Valley, San Francisco, and the East Bay. MBP is a 50 acre/18 building/900,000 square foot complex in a modern, carefully planned, park-like/campus environment with abundant landscaping, ample parking, and onsite food service and recreational facilities. Depomed, United Parcel Service, PPD, Acclarent, Pacific Biosciences, and a variety of high technology and biotech firms make Menlo Business Park their home, creating a dynamic, growth-oriented environment.

*Exclusive agents:*



(650) 330-3600

*Come grow with us.*

# Menlo Business Park



1555 Adams Drive, Building 17  
Menlo Park

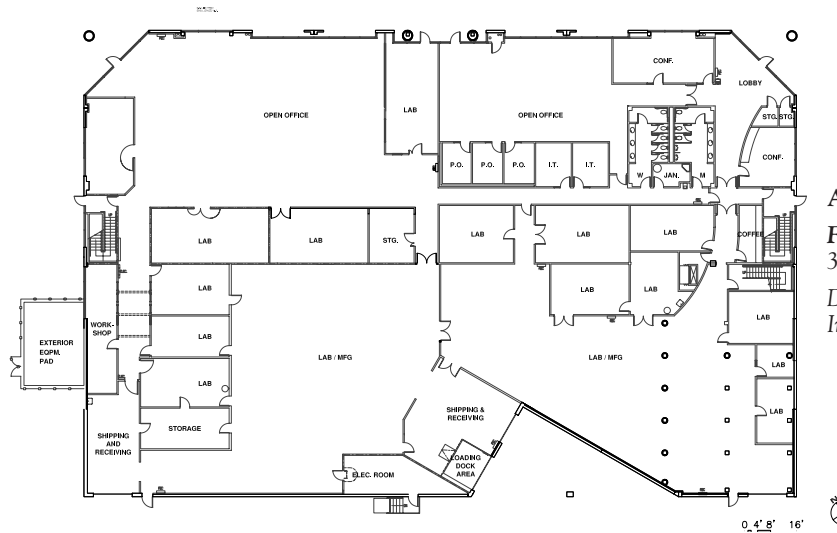
Quality professional office,  
laboratory/manufacturing, and  
server room space.

Beautifully landscaped  
with many amenities.

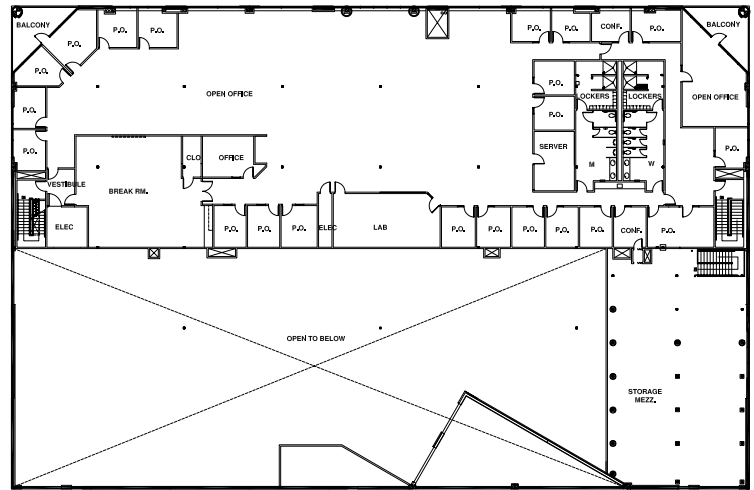
Highest quality property  
management and tenant services.

## Menlo Business Park — an exceptional, high quality professional environment.

1555 Adams Drive provides a cost-effective solution for a fast-paced manufacturing or R & D facility. With a flexible interior and key manufacturing features, this facility is ideal for any company seeking an efficient, attractive and modern work environment.



Available:  
**First Floor:**  
33,400 sq. ft.  
Date Available:  
Immediately



Available:  
**Second Floor:** 14,173 sq. ft.  
Date Available: Immediately  
  
Total Available Space: 47,573 sq. ft.



© 2010, Tarlton Properties

Contact John Tarlton at:



COMMERCIAL DEVELOPMENT  
& PROPERTY SERVICES

1530 O'Brien Drive, Suite C  
Menlo Park, CA 94025  
6650.330.3600 ■ fax 650.330.3636